

R32 GTR Dual Pump Mount Instructions

Items Included

- Fuel pump mounting bracket
- Clamping plate
- Locking nuts
- Fuel pump clamps



Installation

Note: Set up images show a prototype mount. Your mount will look like the one above.

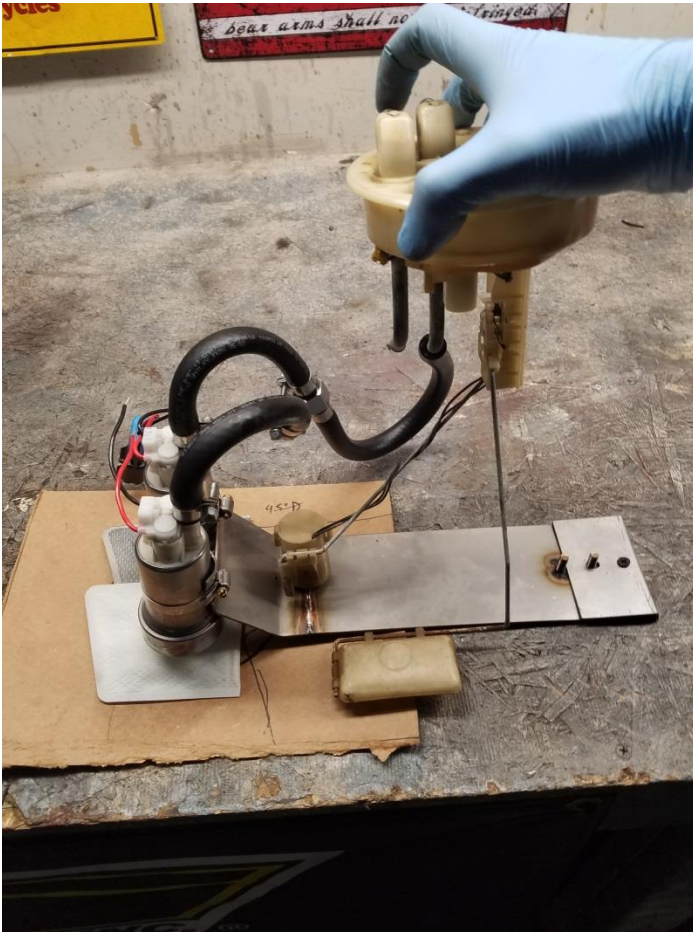
1. Drain fuel tank by bypassing the factory relay or changing your fuel pump active state to “on” in your ECU (standalone only).
2. Remove fuel pump cover plate, electrical connections, and fuel lines. Label the fuel lines so they go back on correctly.
3. Unscrew the fuel hat lock. Carefully remove the fuel hat. The sending units are fragile so take your time.
4. Remove the factory fuel pump. There is a tab on the backside to press. It will then slide up and out.
5. Remove the fuel pump mounting tray. There is a smaller tab on the bottom right front of the tray. Press and slide toward the center of the tank.

6. Assemble the pumps on the dual pump mount as shown. The mount will sit about $\frac{1}{4}$ " off the bottom of the tank. Set up the bottom of the fuel pump sock to be $\frac{1}{4}$ " lower than the flat surface of the mount. Do not overtighten the clamps. See below image:



7. At this time you will need to make your fuel lines. This part is up to you. However you **MUST** use submersible high pressure line. See pictures below showing how I set up mine. Fittings shown are not included as this is only one way to set up the fuel lines.





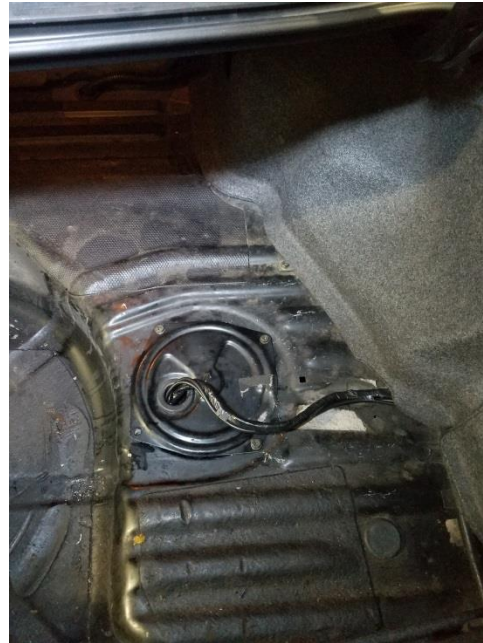
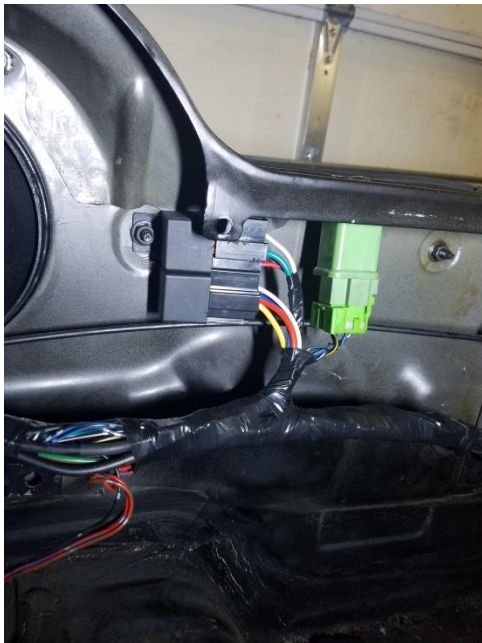
8. You will now need to create a wire harness for your pumps. I chose to drill a $\frac{1}{4}$ " hole in the fuel hat in the 3-o'clock position. It is aligned with one of the many cavities on the underside of the hat. This allows the cavity to later be filled with sealer creating a leak and smell free job. I have 40" of wire inside the tank to make removal of the fuel hat easy as it must be pulled quite a way out of the tank to get the sending units free. Fuel pump wire connectors should be placed a few inches outside the top hat on the inside of your car.
9. Once your fuel lines and wiring is sorted, drop your assembled mount, pumps, line, and wiring into the tank with the outlets of the pumps going in first.
10. Slide the pump mount into the factory receiver as pictured.



11. Bolt the clamping plate in place. The nuts only need to be snug. The plates will draw together locking the mount in place. *Note: your mount will have two nuts – pictured is only a prototype.*



12. Install fuel hat and connect your fuel lines. Reconnect the level sending unit wires.
13. Create a relay harness for your pumps. One 40amp relay for each pump. One 10ga power and ground for each pump. Inline fuses for each power supply is highly recommended. See pictures below.



14. Cycle your pumps. Check for leaks, fuel pressure, fuel gauge operation, etc.